



EasyCare Inc.
The Ultimate in Hoof Protection



2021 Product Lineup
www.easycareinc.com



ABOUT EASYCARE INC.

In 1970, Dr. Neel Glass invented the first Easyboot® to help a beloved family horse who was suffering from navicular disease. Over 50 years later, our commitment to helping our equine partners hasn't changed.

Our mission is even stronger:

"To improve the well-being of horses by providing the equestrian community with superior service, education and innovative equine products."

Thanks to a talented and dedicated team, EasyCare has a product lineup for 2021 full of reliable favorites and new cutting-edge designs. I'm proud that we can offer you a variety of natural hoof care solutions to support your human-horse experience for any situation – anywhere.

Enjoy the ride,

Garrett Ford

Garrett Ford

President of EasyCare Inc.

TABLE OF CONTENTS

Easyboots and EasyShoes Overview	4
EasyCare Guarantee.....	6
How to Measure	7
PERFORMANCE.....	8
Easyboot Fury	8
Easyboot Glove Soft.....	9
Easyboot Epic	9
Easyboot LC (Love Child).....	10
Easyboot Glue-On	10
Easyboot Flip Flop	10
PLEASURE.....	11
Easyboot Back Country.....	11
Easyboot Trail	11
Easyboot Trail Original	11
Old Mac's G2.....	12
Easyboot Sneaker	12
Easyboot Mini	12
THERAPY	13
EasyCare Therapy Click System.....	13
Easyboot Cloud.....	14
Easyboot Rx.....	14
Easyboot Zip.....	14
ACCESSORIES	15
Comfort Pads	15
EasyCare Quick Studs	15
Quick Stud Application Tool	15
EasyCare Hoof Pick Wire Brush.....	15
EasyCare Hoof Pick	15
EASYSHOE	16
EasyShoe.....	16
EasyShoe Accessories	16
EasyShoe Performance	16
EasyShoe Performance N/G	16
EasyShoe Versa	17
EasyShoe Versa Grip.....	17
EasyShoe Versa Grip Gold.....	17
EasyShoe Versa Grip With Studs	17
EasyShoe Versa Grip Light	17
11 Finger Tabs.....	18
EasyShoe Compete.....	18
EasyShoe Sport.....	18
E-Z RIDE STIRRUPS	19
E-Z Ride Ultimate Ultra Stirrups	19
E-Z Ride Stirrups	19
OTHER PRODUCTS.....	20
The HiTie™ Trailer Tie System.....	20
HiTie Accessories	20

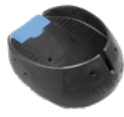
PERFORMANCE



Easyboot
Fury Heart



Easyboot
Fury Sling



Easyboot
Fury Glue-On



Easyboot
Glove Soft



Easyboot
Epic



Easyboot
Glue-On



Easyboot
Flip Flop



Easyboot
LC

The Performance line is made for aggressive riding, long distance and speed. This line offers low profile, secure fitting hoof protection, designed to reduce interference and allow for increased training time. The Performance line offers both boots and glue-on hoof protection. Contributing to more top finishes at the world's toughest endurance races than any other brand, EasyCare's performance line has proven to hold up under the most challenging conditions.

Our Performance line includes the Fury Heart, Fury Sling, Fury Glue-On, Glove Soft, Epic, Glue-On, Flip Flop and Love Child (LC).

PLEASURE



Easyboot
Back Country



Easyboot
Trail Original



Easyboot
Trail



Old Mac's G2



Easyboot
Sneaker



Easyboot
Mini

The Pleasure lineup is built with easy application and removal in mind. Any boot in this category is ideal for trail riding, as a replacement for a lost shoe or protection for a sore-footed horse.

Our Pleasure line includes the Trail, Trail Original, Old Mac's G2, Back Country, Easyboot Mini, and Easyboot Sneaker.

THERAPY



Easyboot
Cloud



Therapy Click
System



Easyboot
Zip



Easyboot
Rx

The Therapy line offer a range of innovative therapeutic boot for comfort, support, rehab and medicating. If your horse suffers from chronic lameness, founder, laminitis, thin soles, abscesses, shipping stress or any other hoof and lower limb problems, we have a boot that will provide instant and ongoing relief.

Our Therapy lineup includes the Cloud, Rx, and Zip.*Most therapy boots will accommodate the Therapy Click System.

EASYSHOE



EasyShoe
Sport



EasyShoe
Performance



EasyShoe
Performance N/G



EasyShoe
Compete



EasyShoe
Versa Grip



EasyShoe Versa
Grip w/Studs



EasyShoe
Versa Grip Gold



EasyShoe
Versa Grip Light

With our EasyShoe lineup you can provide constant protection to the hoof while still enjoying the benefits of a barefoot horse. The revolutionary EasyShoe is designed to allow the hoof to expand and contract, both laterally and vertically - as nature intended. Utilizing the latest polyurethane technology, the EasyShoe offers maximum durability and protection in addition to dramatically reducing concussion on hard surfaces. The EasyShoe line offers shoes that can be nailed to the hoof, glued to the hoof, or a combination of both.

Our EasyShoe line includes Performance, Performance N/G, Sport, Compete, Versa, Versa Grip, Versa Grip Gold, Versa Grip Light, and Versa Grip with Stud Inserts.

Products	Riding Distance Miles Per Week			Not for Riding	Application Difficulty		Traction	Fit Kit Available
	Unlimited	Up to 50	25		Easiest	Hardest		
PERFORMANCE								
Easyboot Fury Heart	✓							✓
Easyboot Fury Sling	✓							✓
Easyboot Fury Glue-On	✓							✓
Easyboot Glove Soft	✓							✓
Easyboot Epic	✓							
Easyboot Glue-On	✓							✓
Easyboot Love Child (LC)	✓							
Easyboot Flip Flop	✓							
PLEASURE								
Easyboot Back Country		✓						✓
Easyboot Trail			✓					
Easyboot Trail Original			✓					
Easyboot Sneaker			✓					
Original Easyboot	✓							
Easyboot Mini			✓					
Old Mac's G2			✓					
THERAPY								
Easyboot Cloud				✓				
Easyboot Rx				✓				
Easyboot Zip				✓				
Therapy Click System								
EASYSHOES								
EasyShoe Performance	✓							
EasyShoe Performance NG	✓							
EasyShoe Sport	✓							
EasyShoe Compete		✓						
EasyShoe Versa Grip	✓							
EasyShoe Versa Grip Gold	✓							
EasyShoe Versa Grip with Studs	✓							
EasyShoe Versa Light	✓							



The EasyCare Guarantee

We back all of our products with the EasyCare Guarantee. If you are not completely satisfied with your product for any reason, EasyCare will gladly credit back the purchase price (excluding shipping and handling) within 45 days of purchase.

If you have purchased an EasyCare product through one of our partners, please return the product to the place of purchase for the same Guarantee service. We do not provide a refund or credit for items purchased from an EasyCare dealer.

The Guarantee does not cover:

- Adhesives and packing materials
- Bargain Bin, factory seconds, or products that were purchased as used
- Boots altered by heat fitting, used over steel, aluminum or composite horseshoes
- Damage inflicted by omnivorous horses, rodents, or other unusual abuse
- Glue-On boots, shoes, products or accessories that are not in their original, unopened packaging. EasyCare, at its sole discretion, may void the Guarantee if glue-on products appear to have been removed from packaging.

Additional information is available at:

www.easycareinc.com/guarantee

Have Questions?

Call 800.447.8836 or email admin@easycareinc.com.

EasyCare Product Specialists are here to help you find the right boot.

Check our website for information on hoof care and hoof boots.

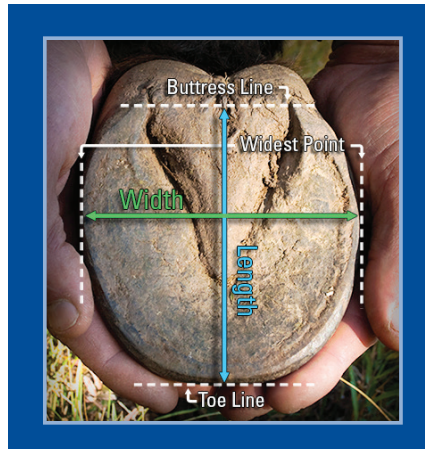
www.easycareinc.com

How to Measure

The biggest determining factor in EasyCare hoof boot* and EasyShoe success is fit. Always measure as soon as possible after a fresh trim. Waiting to take measurements can result in a poor fit.

Check the product size chart before starting your measurements. If the sizes are shown in millimeters only, be sure to measure in millimeters. Measuring in inches and converting to millimeters will render the measurement process inaccurate.

1. Measure the width of the hoof across the bottom at the widest point.
2. Measure the length of the hoof from the toe to the buttress line of the heel. The buttress line is the farthest weight bearing point of the heel where the hoof wall ends. Do not include the heel bulbs in the measurement.
3. Compare your measurements with the appropriate size chart. Please note: each model has its own unique size chart.
4. Ideally, the length and width measurement will fit into the same size. If the length and width measurements indicate different sizes, select the larger size. If the width and length measurements are more than one size apart, your selected model is not recommended.** Check your measurements against an alternative product in the EasyCare line - another model may accommodate your horse's hoof shape better.



* Hoof boots should be snug before tightening. After tightening, the boot should be a close fit around the hoof wall. You should not be able to turn or twist the boot.

**If the hoof measurements are more than one size apart in length and width, please call an EasyCare Product Specialist at 800.447.8836.

Fit Kits: Try Before You Buy



Fit Kits are available for the Easyboot Fury, Easyboot Glove, Easyboot Glove Soft, Easyboot Glue-On, and Easyboot Back Country.

Call us at 800.447.8836 for additional details.



PERFORMANCE

Easyboot Fury PATENTED

The new Easyboot Fury is the first hoof boot that is adjustable in both length and height. This function provides a secure, comfortable fit for dimensional hoof changes that occur throughout the trim cycle. The durable shell has a unique insole design to accommodate a Heel Counter that provides up to 25mm of adjustable length and a Heel Sling that adjusts the heel height up to 16mm. Both operate smoothly in conjunction for a true fit, without bulky buckles or hardware. The Easyboot Fury is exceptionally easy to put on and take off, shock absorbing, and without fabric or stitching, it is easy to wash and quick to dry.



The Easyboot Fury line is available in three models: Heart, Sling and Glue-On.

Easyboot Fury Heart

SB-EBFH

Comes with the Heel Counter and Heel Sling to fully and easily adjust the length and height. Quick and easy put on and take off, no hook and loop, no cables, lightweight, easy to wash and quick drainage.



Easyboot Fury Sling

SB-EBFS

A minimalist design that comes with a padded Heel Sling that pivots backward for quick and easy put on and take off. Heel length and height are adjustable. No hook and loop, no cables, lightweight, easy to wash and quick drainage.



Easyboot Fury Glue-On

SB-EBFG

A longer glue-on shell that comes with a slot to accommodate different cushion densities to soften or stiffen the heel area of the boot. The shell length is trimmable to customize the level of support.



Size	Width in mm	Length in mm
0	104-109mm	102-120mm
0.5	108-113mm	108-125mm
1	112-117mm	112-130mm
1.5	116-121mm	116-135mm
2	120-125mm	120-140mm
2.5	124-129mm	124-145mm
3	128-133mm	128-150mm
3.5	132-137mm	132-155mm
4	136-140mm	136-160mm

Easyboot Glove Soft

SB-GLS and SB-GLSW

The Easyboot Glove Soft is based on our best-selling form-fitting boot, the Easyboot Glove. This boot has a new and improved soft elastic gaiter. Like a glove, the boot hugs the hoof and responds like a natural foot. It fits like a second skin and doesn't add bulk, width or hinder mobility.

No external hardware means that there is no need to worry about grass or sticks getting caught in the boots. And because the material stretches over the hoof and clings to the wall, debris stays out of the boot even through sandy and muddy conditions. The elastic cap at the rear of the gaiter fits the contours of the heel bulb while offering generous proportions of stretch and strength. Power Straps are recommended for aggressive riding, hilly terrain and muddy conditions.



Size Chart – Normal

Size	Width in mm	Length in mm
00	96-99mm	106-109mm
00.5	100-103mm	110-113mm
0	104-107mm	114-117mm
0.5	108-111mm	118-121mm
1	112-115mm	122-125mm
1.5	116-119mm	126-129mm
2	120-123mm	130-133mm
2.5	124-127mm	134-137mm
3	128-131mm	138-141mm
3.5	132-135mm	142-145mm
4	136-139mm	146-149mm
4.5	140-143mm	150-153mm
5	144-147mm	154-157mm

Size Chart – WIDE

Size	Width in mm	Length in mm
0W	114-117mm	114-117mm
0.5W	118-121mm	118-121mm
1W	122-125mm	122-125mm
1.5W	126-129mm	126-129mm
2W	130-133mm	130-133mm
2.5W	134-137mm	134-137mm
3W	138-141mm	138-141mm

Always measure in millimeters as directed in "How to Measure" on page 9. A Fit Kit is available to ensure correct sizing.

Easyboot Epic

SB-EASYE

The Easyboot Epic is the ideal boot for aggressive conditions or for a horse that is difficult to keep booted. The attached Easyboot Gaiter provides extra protection to the hoof and prevents excess dirt and debris from entering the boot. It also helps secure the boot in extreme conditions such as mud, snow and water crossings.



Size	Width in inches	Length in inches	Size	Width in mm	Length in mm
Pony	3 3/16" - 3 3/8"	3 3/8" - 3 5/8"	Pony	78-85mm	85-92mm
000	3 3/8" - 3 13/16"	3 5/8" - 4 3/16"	000	86-97mm	93-105mm
00	3 13/16" - 4 3/8"	4 3/16" - 4 5/8"	00	98-110mm	106-117mm
0	4 3/8" - 4 9/16"	4 5/8" - 4 15/16"	0	111-116mm	118-124mm
1	4 9/16" - 4 7/8"	4 15/16" - 5 1/8"	1	117-123mm	125-130mm
2	4 7/8" - 5 1/8"	5 1/8" - 5 9/16"	2	124-130mm	131-140mm
3	5 1/8" - 5 1/2"	5 9/16" - 5 15/16"	3	131-139mm	141-150mm
4	5 1/2" - 5 15/16"	5 15/16" - 6 7/16"	4	140-150mm	151-163mm
5	5 15/16" - 6 7/16"	6 7/16" - 6 7/8"	5	151-163mm	164-174mm
6	6 7/16" - 6 7/8"	6 7/8" - 7 7/16"	6	164-175mm	175-188mm
7	6 7/8" - 7 9/16"	7 7/16" - 7 3/4"	7	176-192mm	189-195mm

Easyboot LC (Love Child)

SB-EBLC

The Easyboot LC is a hybrid of the Easyboot Glue-On shell and the EasyShoe Performance. Intended as glue-on hoof protection for the entire trim cycle, it's a great option for endurance riders and conditioning, and works well for therapy purposes. The keyhole design allows for independent heel movement both horizontally and vertically with each foot fall, and the flexible rubber insole supports natural heel growth and expansion over time.

It can be common to see 4-8mm of heel expansion in each four to six week application. The length of the LC is longer than other EasyCare models and should be cut to fit. Cuff height has two lines that guide trimming the upper if a lower profile install is desired. Four holes in the cuff act as dowel pins and strengthen the adhesive bond. When applying the Easyboot LC for a full trim cycle we recommend pretreating the sole with an antimicrobial hoof putty to help prevent the occurrence of thrush.



Size Chart – Normal

Size	Width in mm	Length in mm
0	104-107mm	111-118mm
0.5	108-111mm	116-123mm
1	112-115mm	121-128mm
1.5	116-119mm	126-133mm
2	120-123mm	132-139mm
2.5	124-127mm	134-141mm
3	128-131mm	139-146mm
3.5	132-135mm	142-149mm
4	136-139mm	145-152mm

Easyboot Glue-On

SB-EBGOS and SB-EBGOSW

The Easyboot Glue-On is a high performance boot and a dependable option for horses in speed and long distance events. These boots are perfect for pack trips, barrel racing and multi-day competitions.

In order for this boot to work properly, it requires a snug fit. The foot must be dry during application and the glue-on process must be carefully followed. We don't recommend leaving the boot on for more than 10 days in a dry environment or 5 days in a wet, humid environment. Refer to the Easyboot Glue-On Application Guide for complete instructions.



Size Chart – Normal

Size	Width in mm	Length in mm
00	96-99mm	106-109mm
00.5	100-103mm	110-113mm
0	104-107mm	114-117mm
0.5	108-111mm	118-121mm
1	112-115mm	122-125mm
1.5	116-119mm	126-129mm
2	120-123mm	130-133mm
2.5	124-127mm	134-137mm
3	128-131mm	138-141mm
3.5	132-135mm	142-145mm
4	136-139mm	146-149mm
4.5	140-143mm	150-153mm
5	144-147mm	154-157mm

Size Chart – WIDE

Size	Width in mm	Length in mm
0W	114-117mm	114-117mm
0.5W	118-121mm	118-121mm
1W	122-125mm	122-125mm
1.5W	126-129mm	126-129mm
2W	130-133mm	130-133mm
2.5W	134-137mm	134-137mm
3W	138-141mm	138-141mm

Always measure in millimeters as directed in "How to Measure" on page 9. A Fit Kit is available to ensure correct sizing.

Easyboot Flip Flop

SB-EB-FF

The Easyboot Flip Flop is a hybrid between the Easyboot Glue-On and the EasyShoe. It boasts a simple gluing procedure combined with an open back design allowing it to stay on the hoof for the duration of the trim cycle. The Flip Flop is an easy "set it and forget it" solution well-suited for both performance and therapeutic applications.

The Easyboot Flip Flop is glued only to the dorsal wall of the hoof. Due to the lack of movement in this part of the hoof, minimal stress is placed on the adhesive bond. This design ensures a reliable bond, week after week. The open back allows for airflow to the frog and sole and will not hamper the natural mechanics of the back portion of the hoof. The long-term effects of increased hoof flexion can promote a highly developed vascular system along with an overall healthier hoof.



Size	Width in mm	Length in mm
0	104-107mm	Trim to size
0.5	108-111mm	Trim to size
1	112-115mm	Trim to size
1.5	116-119mm	Trim to size
2	120-123mm	Trim to size
2.5	124-127mm	Trim to size
3	128-131mm	Trim to size



PLEASURE

Easyboot Back Country

SB-BC and SB-BCW

The Easyboot Back Country features a Comfort Cup Gaiter that's soft and thick, and a front shield with a sleek fit. The boot excels in the pleasure riding category, but easily doubles as a performance boot. Ideal for short or long rides, be sure to carry one with you because it's also a great replacement for a lost shoe.

The Easyboot Back Country features include:

- Comfort Cup Gaiter supports and protects soft tissue areas
- Lightweight upper stabilizes the boot on the hoof
- Completely convertible and replaceable
- Removable rear snug strap is reversible for left or right hooves
- Quick and easy to put on and take off.

The Easyboot Glove or Easyboot Glue-On can be converted into the Easyboot Back Country (additional accessories required). All components of the Easyboot Back Country are replaceable.



Size Chart – Normal

Size	Width in mm	Length in mm
.00	96-99mm	106-109mm
00.5	100-103mm	110-113mm
0	104-107mm	114-117mm
0.5	108-111mm	118-121mm
1	112-115mm	122-125mm
1.5	116-119mm	126-129mm
2	120-123mm	130-133mm
2.5	124-127mm	134-137mm
3	128-131mm	138-141mm
3.5	132-135mm	142-145mm
4	136-139mm	146-149mm
4.5	140-143mm	150-153mm
5	144-147mm	154-157mm

Size Chart – WIDE

Size	Width in mm	Length in mm
0W	114-117mm	114-117mm
0.5W	118-121mm	118-121mm
1W	122-125mm	122-125mm
1.5W	126-129mm	126-129mm
2W	130-133mm	130-133mm
2.5W	134-137mm	134-137mm
3W	138-141mm	138-141mm

Always measure in millimeters as directed in "How to Measure" on page 9. A Fit Kit is available to ensure correct sizing.

Easyboot Trail

SB-EBNT

Easyboot Trail Original

SB-EBT

The Easyboot Trail and Trail Original are the easiest hoof boots in the world to apply and remove. Back by popular demand, our most affordable boot, the Trail Original comes in a sturdy Cordura® fabric exterior with a padded leather band, and the new Trail comes with a tough protective shield and comfortable padded neoprene band. Both open up completely to slip on and off over a variety of hoof shapes and sizes. A double hook and loop attachment system protects the entire hoof wall, keeping the boots firmly in place. They're perfect for the casual rider and double as therapy boots.



Easyboot Trail

Easyboot Trail Original

Size	Width in inches	Length in inches	Size	Width in mm	Length in mm
0	3 15/16" - 4 1/8"	4 1/8" - 4 5/16"	0	100-105mm	105-110mm
1	4 1/8" - 4 5/16"	4 5/16" - 4 1/2"	1	105-110mm	110-115mm
2	4 5/16" - 4 1/2"	4 1/2" - 4 3/4"	2	110-115mm	115-120mm
3	4 1/2" - 4 3/4"	4 3/4" - 4 15/16"	3	115-120mm	120-125mm
4	4 3/4" - 4 15/16"	4 15/16" - 5 1/8"	4	120-125mm	125-130mm
5	4 15/16" - 5 1/8"	5 1/8" - 5 5/16"	5	125-130mm	130-135mm
6	5 1/8" - 5 5/16"	5 5/16" - 5 1/2"	6	130-135mm	135-140mm
7	5 5/16" - 5 1/2"	5 1/2" - 5 11/16"	7	135-140mm	140-145mm
8	5 1/2" - 5 11/16"	5 11/16" - 5 15/16"	8	140-145mm	145-150mm
9	5 11/16" - 5 15/16"	5 15/16" - 6 1/8"	9	145-150mm	150-155mm
10	5 15/16" - 6 1/8"	6 1/8" - 6 5/16"	10	150-155mm	155-160mm
11	6 1/8" - 6 1/2"	6 5/16" - 6 11/16"	11	155-165mm	160-170mm
12	6 1/2" - 6 7/8"	6 11/16" - 7 1/8"	12	165-175mm	170-180mm

Old Mac's G2

OM

Every Old Mac's G2 horse boot has a unique hi-tech performance outsole and incorporates EasyCare's patented Thermo Plastic Urethane (TPU) compound which minimizes concussion and shortens recovery time for horses with concussion-related injuries. It's a great option for pleasure riding (less than 25 miles per week) and can also serve as a therapy boot. Try the Old Mac's G2 if your horse suffers from arthritis, pedal bone fractures, navicular disease, ringbone, laminitis (founder), bruised soles, or scalping from overreaching. **Sold in pairs.**



Size	Width in inches	Length in inches	Size	Width in mm	Length in mm
0	3 15/16" - 4 1/8"	4 1/8" - 4 5/16"	0	100-105mm	105-110mm
1	4 1/8" - 4 5/16"	4 5/16" - 4 1/2"	1	105-110mm	110-115mm
2	4 5/16" - 4 1/2"	4 1/2" - 4 3/4"	2	110-115mm	115-120mm
3	4 1/2" - 4 3/4"	4 3/4" - 4 15/16"	3	115-120mm	120-125mm
4	4 3/4" - 4 15/16"	4 15/16" - 5 1/8"	4	120-125mm	125-130mm
5	4 15/16" - 5 1/8"	5 1/8" - 5 5/16"	5	125-130mm	130-135mm
6	5 1/8" - 5 5/16"	5 5/16" - 5 1/2"	6	130-135mm	135-140mm
7	5 5/16" - 5 1/2"	5 1/2" - 5 11/16"	7	135-140mm	140-145mm
8	5 1/2" - 5 11/16"	5 11/16" - 5 15/16"	8	140-145mm	145-150mm
9	5 11/16" - 5 15/16"	5 15/16" - 6 1/8"	9	145-150mm	150-155mm
10	5 15/16" - 6 1/8"	6 1/8" - 6 5/16"	10	150-155mm	155-160mm
11	6 1/8" - 6 1/2"	6 5/16" - 6 11/16"	11	155-165mm	160-170mm
12	6 1/2" - 6 7/8"	6 11/16" - 7 1/8"	12	165-175mm	170-180mm

Easyboot Sneaker

SB-EBSF (NORMAL) AND SB-EBSH (NARROW)

The Easyboot Sneaker is our most flexible hoof boot. The blended rubber and urethane sole is designed to give the hoof maximum flexibility. The material absorbs shock, wears well, and allows the most hoof mechanism in the EasyCare line. The Easyboot Sneaker is a great hoof boot for pleasure riders, turn out and medical uses.

The design allows for easy on and off while maintaining a snug and secure fit. The patent pending internal strapping system locks the heel in place to reduce twisting and improve boot retention.

The front strap is quick and easy to fasten and can be replaced if damaged.

Offered in both regular and narrow pattern sizing, the Easyboot Sneaker will cover a wide variety of hoof sizes. With the option to add quick studs for additional grip on snow and ice, the Easyboot Sneaker is a true year-round option for protecting the hoof.



Size Chart – Normal

Size Chart – Narrow

Size	Width in mm	Length in mm
00	90-100mm	95-105mm
0	100-110mm	105-115mm
1	110-120mm	115-125mm
2	120-130mm	125-135mm
3	130-140mm	135-145mm
4	140-150mm	145-155mm
5	150-160mm	155-165mm

Size	Width in mm	Length in mm
00	80-90mm	95-105mm
0	90-100mm	105-115mm
1	100-110mm	115-125mm
2	110-120mm	125-135mm
3	120-130mm	135-145mm
4	130-140mm	145-155mm
5	140-150mm	155-165mm

Easyboot Mini

SB-EBMINI

Designed for miniature horses, ponies and foals, and easy to apply, the Easyboot Mini molded hoof boot is the ultimate option for tiny hooves. It's the smallest molded hoof boot in the world. The lightweight urethane blended sole allows for traction and protection on any surface. The durable and supple upper keeps the boot secure without interfering with the natural gait. It's ideal for light driving, traction and therapeutic support.

Selecting the correct size ensures maximum performance and boot longevity. Allow for a conservative break-in period to give your horse time to adjust to wearing the boots, then gradually increase the wear time.

Accommodates an EasyCare Comfort Pad for use as a therapy boot.



Size	Width in mm	Length in mm
Mini	44-49mm	49-54mm
Mini 1	50-55mm	55-64mm
Mini 2	56-65mm	65-72mm
Mini 3	66-76mm	73-86mm



THERAPY

EasyCare Therapy Click System (not for riding)

SB-EBTC5 (5 DEGREE) and SB-EBTC10 (10 DEGREE)

The Therapy Click System is a therapeutic aid and a starting point to change breakover and heel elevation. Both the 5-degree and 10-degree bases have been designed with extra depth to give professionals the ability to customize to each unique case. Breakover position and heel height are quickly changed with a rasp or grinder. Add additional height with adhesive products.



The EasyCare Therapy Click System is available for purchase only upon presentation of a veterinarian's recommendation or directly purchased by a veterinarian. The veterinarian's recommendation must include the name of the vet, contact information and confirmation in writing of the veterinarians endorsement of the Therapy Click System.

This policy is in place so that the veterinarian and pet owner can discuss the situation and work together to determine the best protocol. This policy increases the likelihood that the Therapy Click System will be used properly based on veterinarian counsel addressing the specific needs of each individual case.



Therapy Click 10 Degree



Therapy Click 5 Degree



Insert 4 self-tapping screws

This policy is applicable only to sales in the US.

The Therapy Click System can be used in conjunction with the following boot models:

- Easyboot Rx
- Easyboot Cloud
- Easyboot Flip Flop
- Original Easyboot
- Easyboot Epic
- Easyboot Back Country
- Easyboot Glove
- Easyboot Glue-On

EasyCare Therapy Click System Size Chart

Note: Therapy Click System is not designed to work with wide sizes.

Easyboot Glove, Glue-On & Back Country	00	00.5	0	0.5	1	1.5	2	2.5	3	3.5	4	4.5	5
Click Size	B	B	B	C	C	C	C	D	D	D	D	E	E
Easyboot Flip Flop	0	0.5	1	1.5	2	2.5	3						
Click Size	B	C	C	C	C	D	D						
Original Easyboot & Easyboot Epic	Pony	000	00	0	1	2	3	4	5	6	7		
Click Size	NA	NA	B	C	C	D	D	E	NA	NA	NA		
Easyboot Rx	00	0	1	2	3	4	5	6	7				
Click Size	C	C	C	D	D	E	NA	NA	NA				
Easyboot Cloud & Stratus	00	0	1	2	3	4	5	6	7	8			
Click Size	B	C	C	D	D	E	E	NA	NA	NA			

Easyboot Cloud

SB-EBC

The Easyboot Cloud is a therapeutic hoof boot system to give comfort and support to horses with thin soles, abscesses, founder, laminitic stages, stresses of shipping, recovery after workouts or stalling on hard surfaces. It also provides instant and ongoing relief for horses suffering from chronic lameness and general lower limb or hoof problems by aiding movement and reducing recovery time after injury or surgery. Secure fit allows for light turn out.

Seams and edges of the industrial strength Cordura® upper are rounded for safety. A padded collar provides additional relief to the pastern area. Three air vents provide air circulation to keep the hoof cool while preventing the accumulation of dirt and debris.

The Easyboot Cloud is not intended for riding.

As with any hoof or leg related injury, consult your veterinarian or hoof care professional for diagnosis and treatment recommendations



Size	Width in inches	Length in inches	Size	Width in mm	Length in mm
00	3 1/2 - 3 7/8"	4" - 4 3/8"	00	89-99 mm	102-112 mm
0	3 7/8 - 4 1/4"	4 3/8" - 4 5/8"	0	99-108 mm	112-118 mm
1	4 1/4 - 4 7/8"	4 5/8" - 5 1/8"	1	108-124 mm	118-131 mm
2	4 7/8 - 5 1/4"	5 1/8" - 5 3/8"	2	124-133 mm	131-137 mm
3	5 1/4 - 5 7/8"	5 3/8" - 5 7/8"	3	133-149 mm	137-150 mm
4	5 7/8 - 6 1/4"	5 7/8" - 6 1/4"	4	149-159 mm	150-159 mm
5	6 1/4 - 6 11/16"	6 1/4" - 6 11/16"	5	159-170 mm	159-170 mm
6	6 11/16 - 6 15/16"	6 11/16 - 6 15/16"	6	170-177 mm	170-177 mm
7	6 15/16 - 7 3/8"	6 15/16" - 7 3/8"	7	177-188 mm	177-188 mm
8	7 3/8 - 7 1/2"	7 3/8" - 7 7/8"	8	188-191 mm	188-201 mm

Easyboot Rx

SB-EBRX

A lightweight therapy boot for stability and support, the Easyboot Rx is ideal for chronic lameness, laminitis, founder, navicular and other lower limb and hoof problems. It's an excellent choice for horses on stall rest or confined to light turnout, and reduces fatigue during trailering or for horses standing on hard surfaces for extended periods of time.

Each boot comes fitted with a 6mm Comfort Pad to provide immediate relief and additional sole support. Size up one size if you plan on using bandages or 12mm Comfort Pads.

The Easyboot Rx is not intended for riding.

As with any hoof or leg related injury, consult your veterinarian or hoof care professional for diagnosis and treatment recommendations.



Size	Width in inches	Length in inches	Size	Width in mm	Length in mm
00	3 13/16" - 4 3/8"	4 3/16" - 4 5/8"	00	98-110mm	106-117mm
0	4 3/8" - 4 9/16"	4 5/8" - 4 15/16"	0	111-116mm	118-124mm
1	4 9/16" - 4 7/8"	4 15/16" - 5 1/8"	1	117-123mm	125-130mm
2	4 7/8" - 5 1/8"	5 1/8" - 5 9/16"	2	124-130mm	131-140mm
3	5 1/8" - 5 1/2"	5 9/16" - 5 15/16"	3	131-139mm	141-150mm
4	5 1/2" - 5 15/16"	5 15/16" - 6 7/16"	4	140-150mm	151-163mm
5	5 15/16" - 6 7/16"	6 7/16" - 6 7/8"	5	151-163mm	164-174mm
6	6 7/16" - 6 7/8"	6 7/8" - 7 7/16"	6	164-175mm	175-188mm
7	6 7/8" - 7 9/16"	7 7/16" - 7 3/4"	7	176-192mm	189-195mm

Easyboot Zip

SB-EBZ

Easy to apply, the Easyboot Zip is a simple slip-on boot designed to protect the hoof. It's a safer alternative to clumsy foot wraps used for medicating the hoof or keeping the hoof free from dirt and oils. The removable internal leather sole helps pull moisture from the hoof and can be easily removed for cleaning. Not for turn-out.

The Easyboot Zip is not intended for riding.

As with any hoof or leg related injury, consult your veterinarian or hoof care professional for diagnosis and treatment recommendations.



Size	Width in inches	Length in inches	Size	Width in mm	Length in mm
0	3 - 3 13/16"	4 3/16" - 4 5/8"	0	77-97mm	77-97mm
1	3 7/8 - 4 11/16"	4 5/8" - 4 15/16"	1	98-119mm	98-119mm
2	4 3/4 - 5 3/8"	4 15/16" - 5 1/8"	2	120-136mm	120-136mm
3	5 7/16 - 6 3/8"	5 1/8" - 5 9/16"	3	137-162mm	137-162mm
4	6 7/16 - 7 1/16"	5 9/16" - 5 15/16"	4	163-180mm	163-180mm

Comfort Pads

SB-COMPAD-F

EasyCare comfort pads increase solar support so that all horses, sound or unsound, are encouraged to move correctly. They can also be used to improve the fit of a hoof boot. Use them in hoof boots to help transition a horse from shod to barefoot, or as an aid in the treatment of laminitis, navicular and other hoof ailments. We recommend you work with your veterinarian or hoof care professional when treating any type of hoof pathology.



Comfort Pads are available in two thicknesses (6mm and 12mm) and three densities (soft, medium and firm). EasyCare Comfort Pads must be cut to size. Simply stand the horse on the pad, trace around the hoof and trim the comfort pad with scissors to the outline of the hoof before placing the pad in the hoof boot.

- Soft pads offer the most cushion, but the least amount of shock absorption. They are best suited for therapeutic needs.
- Medium pads are a good combination of cushion and shock absorption. They can be used for therapy or riding.
- Firm pads offer very little cushion, but a lot of shock absorption. They work well for riding, and are a great option for horses that need a little more protection than the boots alone provide.

EasyCare Quick Studs

SB-QSTUD16 (16 pack) or SB-QSTUD (Single)

Quick Studs for hoof boots and urethane shoes



Quick Stud Application Tool

SB-QSTUDTOOL



EasyCare Hoof Pick Wire Brush

SB-PBC

EasyCare Hoof Pick Wire Brush



EasyCare Hoof Pick

HOOPICK

EasyCare Hoof Pick: Strong steel, magnetic hoof pick can be used for cleaning hooves and also for working with EasyCare boot cable/buckle systems. Color: EasyCare Blue





EASYSHOE

EasyShoe

EasyCare’s spirit of innovation continues with the revolutionary EasyShoe product lineup.

Enjoy the benefits of a barefoot horse without having to apply and remove boots each time you ride. The EasyShoe allows the hoof to naturally expand and contract, both laterally and vertically. Manufactured with the latest in polyurethane technology, the EasyShoe dramatically reduces concussion on hard surfaces, yet offers maximum durability and longevity. The open sole design assures complete breathability of the sole and frog.

The EasyShoe has excelled on the flat track and in the endurance, dressage and sport horse disciplines. The EasyShoe may also be used to help offset chronic symptoms of thin hoof walls, sensitive heels, quarter cracks and slow hoof growth.

- Stays on the hoof for the entire trimming cycle.
- The open toe design means you can set break-over anywhere.

** Performance N/G only. Can be nailed or glued.*

EasyShoe Accessories

EasyCare recommends the use of Adhere or EasyShoe Bond to apply the EasyShoe. Please thoroughly review the application guides and videos, as these adhesives have different application protocols. Gluing accessories not included.

EasyShoe **PERFORMANCE**

SB-ESP

A wide-webbed shoe with integrated frog support. The unique design maintains support on and around the frog without hampering heel expansion and contraction. The frog support opens with the growth in the heel area during the trimming cycle.



Size	Width in mm	Length in mm
0	105-111mm	108-115mm
1	112-119mm	116-123mm
2	120-127mm	124-131mm
3	128-135mm	132-140mm
4	136-143mm	141-149mm
5	144-152mm	150-159mm

EasyShoe **PERFORMANCE N/G**

SB-ESPNG

A wide-webbed shoe with integrated frog support. The unique design maintains support on and around the frog without hampering heel expansion and contraction. The frog support opens with the growth in the heel area during the trimming cycle. Can be nailed or glued.



Size	Width in mm	Length in mm
0	105-111mm	108-115mm
1	112-119mm	116-123mm
2	120-127mm	124-131mm
3	128-135mm	132-140mm
4	136-143mm	141-149mm
5	144-152mm	150-159mm

EasyShoe **VERSA**

New. The EasyShoe Versa is a hybrid nail-on shoe that features the concussion absorption powers of polyurethane and an internal steel insert. The steel insert gives the shoe more stability in the front portion and offers a stopping point when driving nails. The steel insert is located in the toe area and continues to the widest part of the hoof. This positioning allows the rear portion of the hoof the ability to flex with each footfall. The Versa offers incredible versatility for distance rides, trail horses, and horses working on hard surfaces. The wide web design also makes the Versa ideal for therapy cases. Holds pour-in packing very well.

The EasyShoe Versa line can be applied with nails, glue, or casting. The nailing slots and clear material make nail placement straight forward and are extremely beneficial for achieving an accurate installation.

The EasyShoe Versa has a much more traditional metal clip that is easy to shape. The clips are less bulky and fashioned after traditional iron shoes. Unlike traditional steel or aluminum shoes, no hammer is used to shape the shoe. Simply trace the hoof on the shoe and remove the excess material, as shown in the Versa Application Guide and Video.

EasyShoe **VERSA** Grip

SB-ESVG-F (*front*) SB-ESVG-HS (*hind*)

The Versa Grip features an aggressive, long-wearing, thicker profile with a deeper tread pattern molded from a durable urethane. Pre-angled, integrated clips, 12 nail options, and debris guard.

Comes in both front and hind patterns in sizes from 102-170.

BUY A CASE AND SAVE



EasyShoe **VERSA** Grip Gold

SB-ESVGG-F (*front*) SB-ESVGG-H (*hind*)

The Versa Grip Gold features independent nailing plates for increased shoe flexibility, secure nailing and weight reduction. Pre-angled, integrated clips, 12 nail options and debris guard.

Comes in both front and hind patterns in sizes from 102-170.

BUY A CASE AND SAVE



EasyShoe **VERSA** Grip With Studs

SB-ESVGS-F (*front*) SB-ESVGS-H (*hind*)

The Versa Grip with Studs has the same reliability and durability as the Grip but with threaded inserts for the addition of studs. Pre-angled, integrated clips, 12 nail options and debris guard.

Comes in both front and hind patterns in sizes from 102-170.

BUY A CASE AND SAVE



EasyShoe **VERSA** Grip Light

SB-ESVGL-F (*front*) SB-ESVGL-H (*hind*)

The Versa Grip Light features an aggressive tread pattern with no metal for the lightest weight, flexible and most cost efficient option. 12 nail locations and debris guard.

Comes in both front and hind patterns in sizes from 102-170.

BUY A CASE AND SAVE



11 Finger Tabs

SB-ES-11R

Glue-on tabs available in Rubber (Black) or Urethane (Clear).

EasyShoe Quick Set Super Glue 2 oz.

SB-QS-2



EasyShoe *COMPETE*

SB-ESC

A thin-webbed shoe for use on the track or on turf. The internal metal spine allows for maximum adjustment to a wide variety of hoof shapes and sizes. Available with steel wearplate at the toe.



Size	Width in mm	Length in mm
0	95-115mm	111-118mm
1	105-125mm	119-127mm
2	115-135mm	128-136mm
3	125-145mm	137-143mm

EasyShoe *SPORT*

SB-ESS

A wide-webbed shoe that offers maximum support across the sole. The internal metal spine allows the shoe to be adjusted to many hoof shapes and creates additional structural integrity.



Size	Width in mm	Length in mm
0	100-110mm	114-117mm
0.5	105-115mm	118-121mm
1	110-120mm	122-125mm
1.5	115-125mm	126-129mm
2	120-130mm	130-133mm
2.5	125-135mm	134-137mm
3	130-140mm	138-141mm

E-Z Ride Ultimate Ultra Stirrups

E-Z Ride Ultimate Ultra Stirrups offer cutting edge technology in a lightweight aluminum hoop design. The integrated top bar system allows for three sizes of fenders and stirrup leathers without the need for additional parts or accessories. The new EVA foam pad cushions the ride and the patented dimple design keeps the rider's foot firmly in place no matter what the riding activity or the rider's footwear. Equipped with an aluminum base and loop.

Sold in pairs.

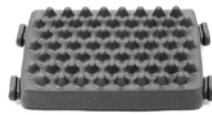


E-Z Ride Ultimate Ultra
SS-UU-C5

Top bar sizes: 1", 2"
and 3"



Cage
SS-UC-C5
for E-Z Ride Ultimate Ultra
Stirrups, Pair



Replacement Stirrup Pad Black
SS-UP-C5
for E-Z Ride Ultimate &
Ultimate Ultra Stirrups, Pair



E-Z Ride Stirrups

E-Z Ride Stirrups have been improved with a sleek, new design that's easier to use and maintain. The pad and optional safety cage slip on and off without the need for rivets, screws or adhesives. The stirrup is more convenient and reliable than ever!

Sold in pairs.

Key Features:

- The stirrup's 5-inch side-to-side width and 4-inch toe-to-heel depth evenly distributes weight throughout the foot.
- The patented top bar controls excessive bounce, absorbs the shock transmitted from the horse, and minimizes fatigue from long hours in the saddle.
- The E-Z Ride Slip-On Pad, made from high-density EVA foam, is replaceable and provides optimum comfort for the knees and back to help prevent overall fatigue.
- The optional nylon E-Z Ride Slip-On Safety Cage provides additional safety depending on the rider's preferred footwear.



Nylon Standard
SS-STIR
Top bar sizes: 1.5", 2", 2.5" or 3"



Stirrup Slip-On Cage
(Nylon Only)
SS-SLIPCAGE



**E-Z Ride Nylon Stirrup
Slip-On Pads**
SS-SLIPPAD



The HiTie™ Trailer Tie System

The HiTie was developed to provide a comfortable and safe alternative to trailer tying and portable corrals. The HiTie gives horses free movement and access to an area equivalent to a 13 foot diameter round pen. This safe, controlled movement gives horses the ability to graze, eat, drink, roll and lie down while tied.



The HiTie System

P14-HITIE

Heavy duty stainless steel and high strength fiberglass construction safely secures your horse. Conveniently stows flush against your trailer when not in use so there's never a need to remove it.

HiTie System Package includes:

- HiTie arm
- Mounting hardware with instructions
- D-Ring Pin & Safety Clip

Important Installation Information:

- Installation instructions are intended as a guide only. It is your responsibility to determine the proper location on your particular trailer to mount the HiTie Trailer Tie System.
- As a general, common sense rule, the HiTie System MUST be mounted to an area on the trailer wall that can support both the weight of the system and any loads put on it by the horse. Mounting to an area with an internal support beam is ideal.
- EasyCare assumes no responsibility for damages or injuries caused by improper mounting.



HiTie Accessories Below Sold Separately



HiTie Bungee Tether

P14-HITIEBUNGEE

All-in-one adjustable length strap attached to a heavy duty elastic cord. System includes everything you need to tether your horse to the HiTie Arm. Bridle clip on one end, hook and loop system on the other end. Designed to break free under heavy stress for horse safety. Black only.



The Clip Quiet

P14-CLIPQUIET

The Clip Quiet connects the Clip to the HiTie arm. Heavy duty webbing construction with a hook and loop fastening system.

Reduces wear and stops rattling noises by eliminating metal-on-metal contact. Provides break protection for horse safety.



HiTie Clip

P14-CLIP

2-part system allows use of a standard lead rope (not included) instead of the Bungee Tether to secure your horse to the HiTie Arm.

The Clip is heavy-duty all metal construction. Spring clip on one end, eye, guide and adjustable tensioner for fastening a lead rope on the other end.



D-Ring Pin & Safety Clip

P14-DPINCLIP

The heavy-duty D-Ring Pin and Safety Clip keeps the HiTie Arm securely in place when in use or stowed for travel or storage.

The HiTie System includes one D-Ring and safety clip.

Order as a spare or replacement.



EasyCare Inc.

Contact us or visit our website to find a dealer near you

Durango, Colorado

800.447.8836

admin@easycareinc.com

www.easycareinc.com

Join the Conversation

For tips and tricks follow EasyCare:



hoofbootnews.com



/easyboot



@easyboot



/easycarevideos

Copyright ©2021 EasyCare Inc.
All rights reserved.

EASycARE PRODUCT
BROCHURE
EC-BROCHURE



6 70786 01007 6